

# PIER 62 PENTHOUSE OFFICE CHELSEA PIERS 22nd Street and the Hudson River



Chelsea Piers is pleased to offer the following prime waterfront office space for lease:

**Space** 3,550 Rentable Square Feet

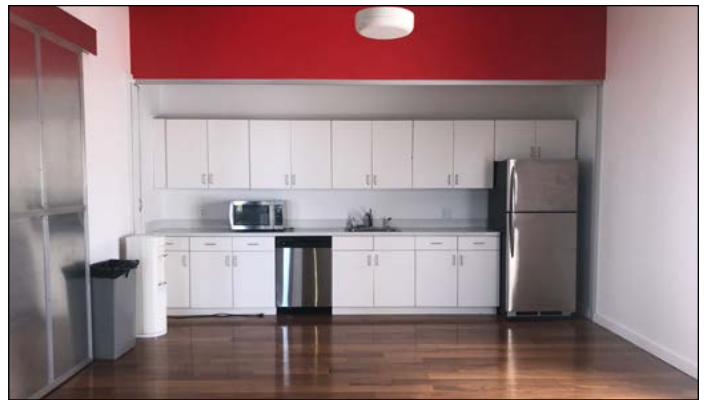
**Price** \$68 per RSF

**Occupancy** Immediate

**Term** Flexible

**Electric** Submetered

**HVAC** Tenant-controlled private unit



Unique features of the space include:

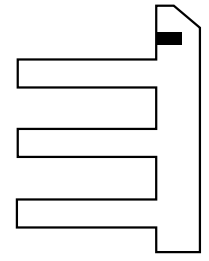
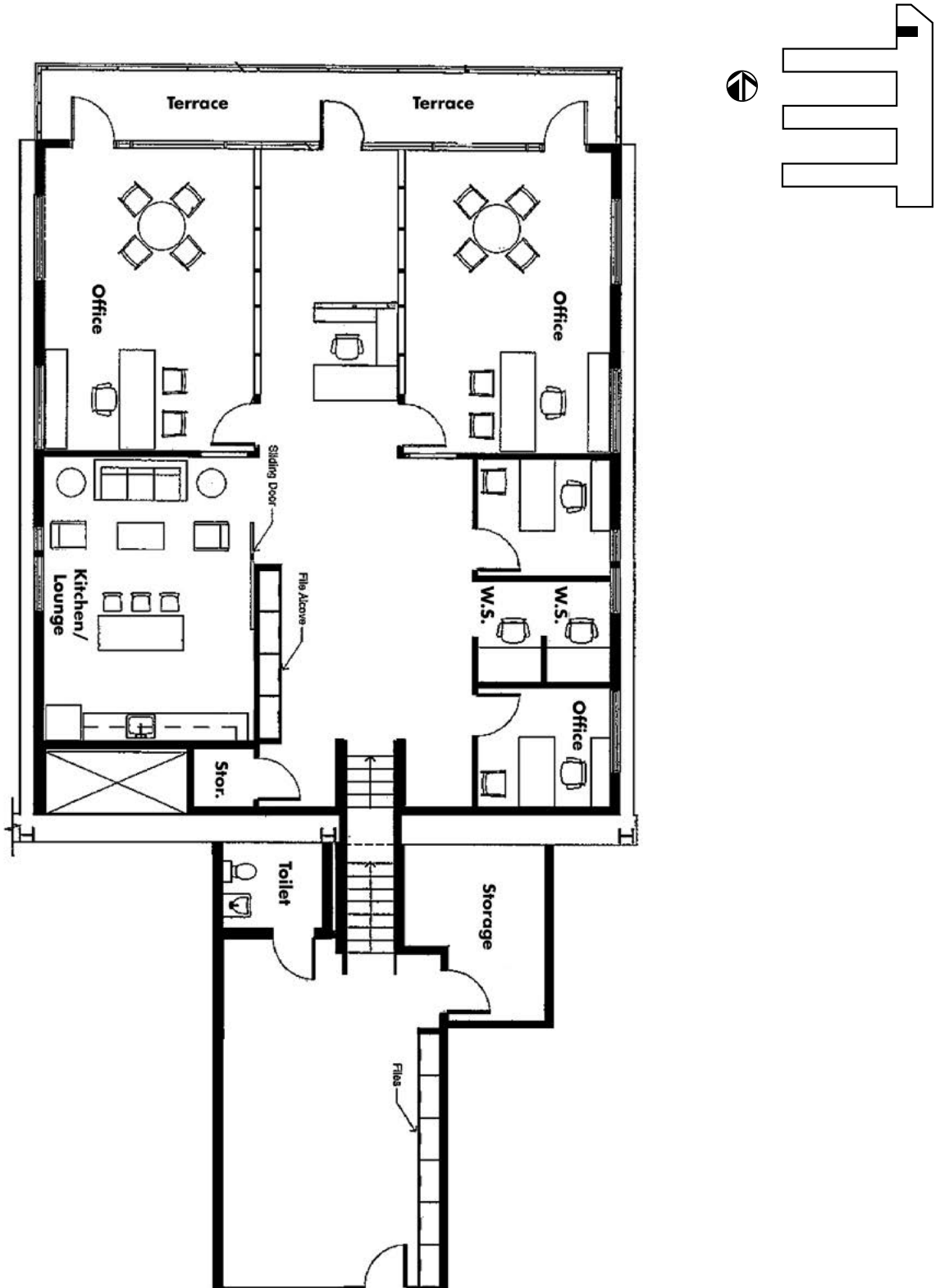
- Waterfront location with Hudson River views
- 10'-14' ceiling heights
- Private, usable terrace overlooking Hudson River & marina
- Private restroom
- Kitchen & conference room
- Mix of 5 offices and open space
- Hardwood floors throughout
- Three sides of windows
- Existing IT room
- Low loss factor
- On-site parking available
- On-site food service & catering available
- Chelsea Piers recreational amenities  
(health club, Field House, skating, bowling, golf & marina)

**SPACE IS AVAILABLE FOR  
IMMEDIATE OCCUPANCY.**

Competitive long-term lease available. If you would like to discuss this in greater detail, please contact:

**Paul Rindone**  
212.336.6755  
rindop@chelseapiers.com

# PIER 62 PENTHOUSE OFFICE CHELSEA PIERS 22nd Street and the Hudson River



Competitive long-term lease available. If you would like to discuss this in greater detail, please contact:

**Paul Rindone**  
212.336.6755  
rindop@chelseapiers.com